

RENTING @ AED43K PER ANNUM
2 BR-Type 3 | Great Location | Up to 2 Months Free



**This property is subject to availability and the price is subject to change. Size may be approximate and images may be generic.*

RESIDENTIAL FOR RENT

Type	Apartment	Built-up Area	1,450 sqft
Location	Al Khan	Bedrooms	2 Bed
Property	Pearl Tower	Bathrooms	3 Bath
Unit View	Lake	Parking	1 Car Park
Entered Date	Jul 24, 2021 12:54 pm	Updated Date	Sep 23, 2023 12:48 pm

Ref#:ATG-10080



AL THURIAH GROUP
Agent



sales@althuriah.com

+971 6 591 1111

Pearl Tower is an exclusive design where the unique engineering touches are blended to give away a sensation of brilliance and elegance. It consists of 18 residential floors, 6 floors car parking space, 144 flats with one, two and three bedrooms.

ABOUT THE APARTMENT:

Unit Reference: TYPE 3

2 Bedrooms / 3 Bathrooms

Maids Room

Payment Plan: Max. 4 cheques

Area size: 1450 sq. ft.

Family Friendly Environment

Well Maintained Building

Spacious and Clean Apartment

24/7 Facilities Management

24/7 Security & CCTV Monitoring

Gym

Pearl Tower has a very distinguished location ideally located at Al Khan area in the Emirate of Sharjah. This area is surrounded by shopping malls and famous Exhibition halls that are very well known in the region.

Everything You Need. All Right Here.

Families don't look for properties, they look for homes. Our aim is to help you find the ideal home that best suits you and your family's needs.

We develop with passion. We build with our hands. We design with creativity. We lease with a smile. We manage with a heart.



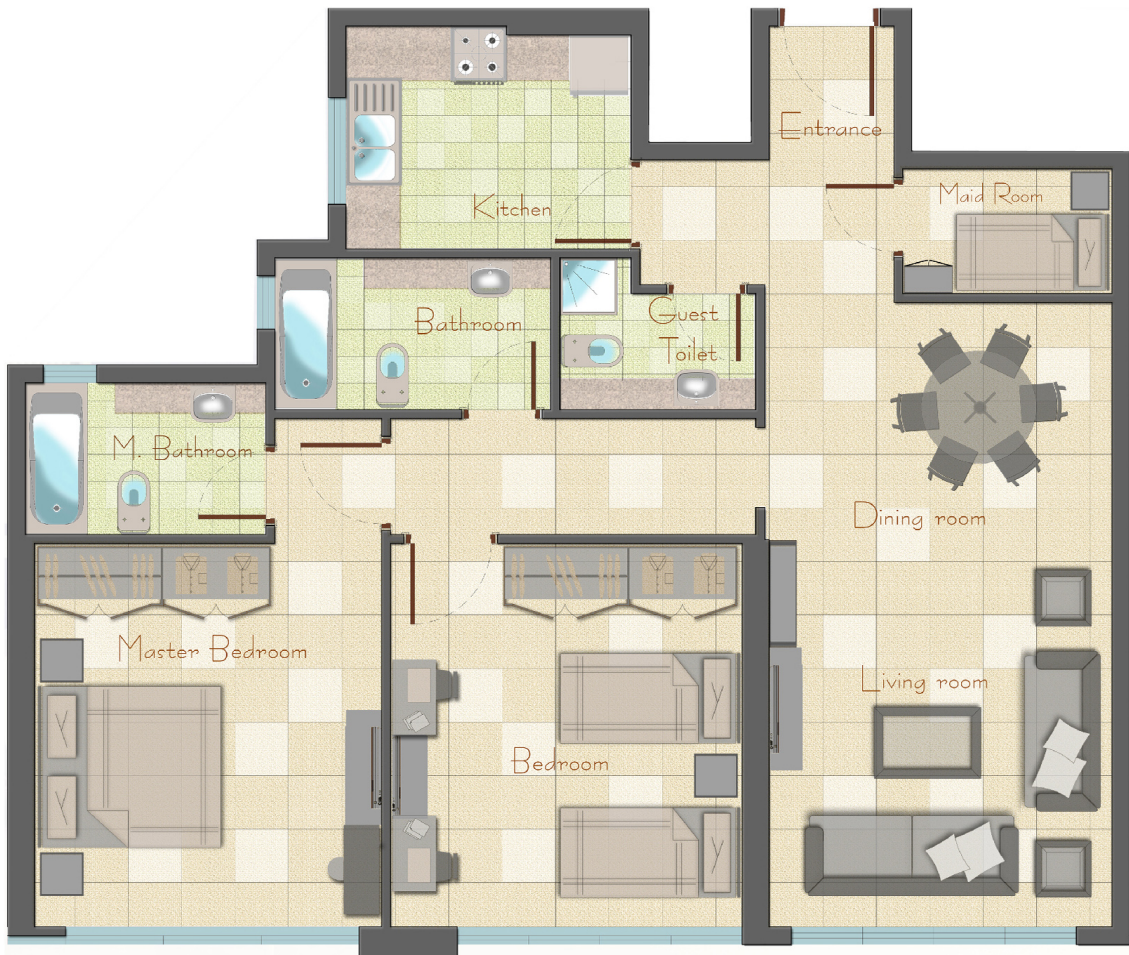
AL THURIAH GROUP

Agent



sales@althuriah.com

+971 6 591 1111



AL THURIAH GROUP
Agent

 sales@althuriah.com
+971 6 591 1111



AL THURIAH GROUP
Agent



sales@althuriah.com

+971 6 591 1111