

SELLING @ AED650K

Ready to Move-in | Incredible 2 Bedroom Apartment



**This property is subject to availability and the price is subject to change. Size may be approximate and images may be generic.*


RESIDENTIAL FOR SALE

Type	Apartment	Built-up Area	1,450 sqft
Location	Al Khan	Bedrooms	2 Bed
Property	Pearl Tower	Bathrooms	3 Bath
Unit View	Lake	Parking	1 Car Park
Entered Date	Jun 9, 2021 08:52 am	Updated Date	Nov 3, 2022 05:18 pm

Ref#:ATG-10051



AL THURIAH GROUP
Agent

 sales@althuriah.com
+971 6 591 1111

Pearl Tower has a very distinguished location ideally located at Al Khan area in the Emirate of Sharjah. This area is surrounded by shopping malls and famous Exhibition halls that are very well known in the region.

Pearl Tower is an exclusive design where the unique engineering touches blended to give away a sensation of brilliance and elegance. It consists of 18 residential floors, 6 floors car parking space, 144 flats with one, two and three bedrooms.

ABOUT THE APARTMENT:

Residential Unit for Sale

2 Bedrooms / 3 Bathrooms

Maids Room

Price: 650,000 AED

Area size: 1450 sq. ft.

Family Friendly Environment

Well Maintained Building

Spacious and Clean Apartment

24/7 Facilities Management

24/7 Security & CCTV Monitoring

Gym

Everything You Need. All Right Here.

Families don't look for properties, they look for homes. Our aim is to help you find the ideal home that best suits you and your family's needs.

We develop with passion. We build with our hands. We design with creativity. We lease with a smile. We manage with a heart.



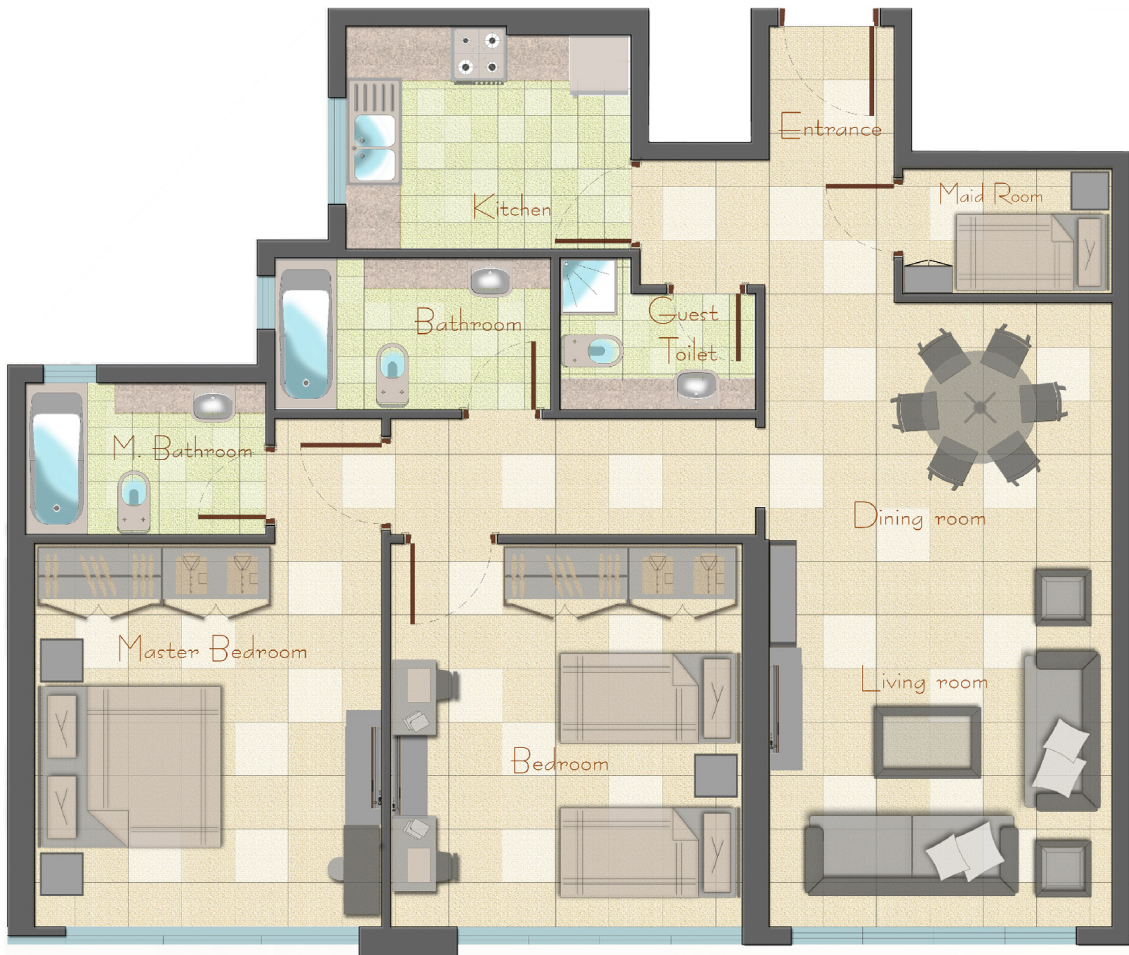
AL THURIAH GROUP

Agent



sales@althuriah.com

+971 6 591 1111



AL THURIAH GROUP
Agent



sales@althuriah.com

+971 6 591 1111



AL THURIAH GROUP
Agent



sales@althuriah.com

+971 6 591 1111